



## Heldhaw Road, Bury St. Edmunds, Suffolk, IP32 7ER

**Rent - £1,650 PCM      Deposit - £1,903**

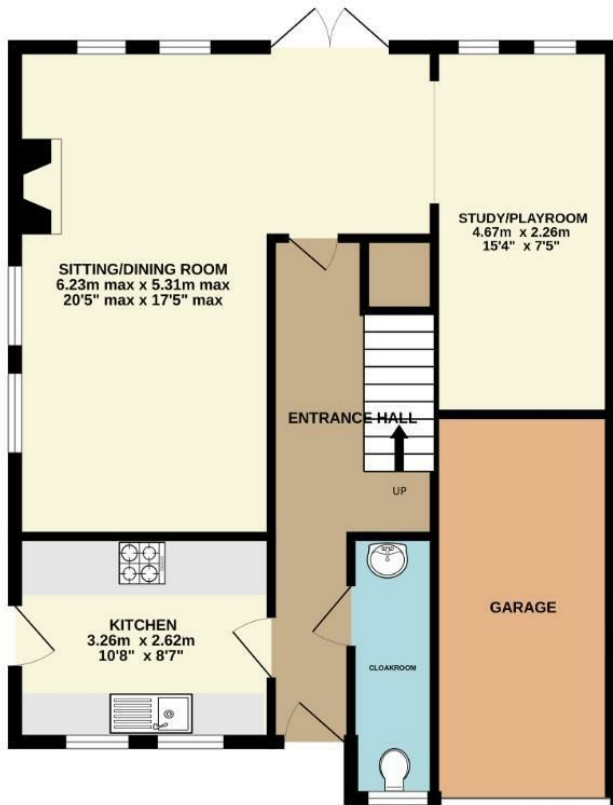
A modern, extended detached family home located on the popular Moreton Hall Development close to schools, shops and sports facilities. The property is offered in well presented condition to Entrance Hall, Cloakroom, Kitchen with electric oven and hob, Sitting/Dining Room, Family Room, Four Bedrooms, En Suite Shower Room and Family Bathroom. To the outside the property offers a Garage, Driveway parking and gardens. The property benefits from Gas Fired Central Heating.

- MODERN DETACHED HOUSE
- KITCHEN WITH ELECTRIC OVEN & HOB
- FOUR BEDROOMS
- GARAGE & DRIVEWAY PARKING
- GAS CENTRAL HEATING, EPC 69, C
- ENTRANCE HALL, CLOAKROOM
- SITTING/DINING ROOM, FAMILY ROOM
- EN SUITE SHOWER ROOM & FAMILY BATHROOM
- GARDENS
- AVAILABLE MID SEPTEMBER

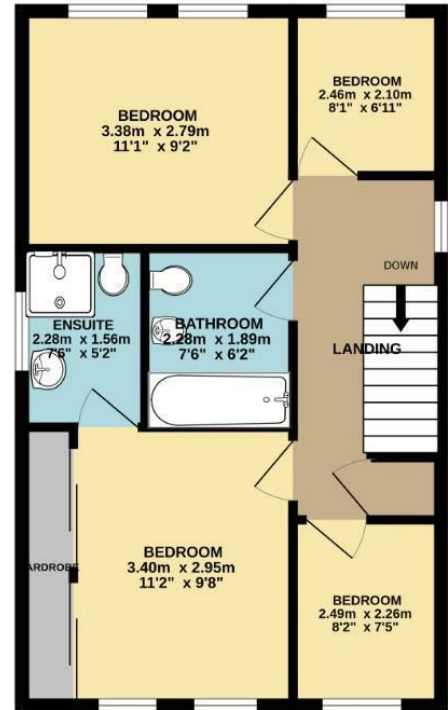




GROUND FLOOR



1ST FLOOR



Whilst every attempt has been made to ensure the accuracy of the floorplan contained here, measurements of doors, windows, rooms and any other items are approximate and no responsibility is taken for any error, omission or mis-statement. This plan is for illustrative purposes only and should be used as such by any prospective purchaser. The services, systems and appliances shown have not been tested and no guarantee as to their operability or efficiency can be given.  
Made with Metropix ©2025.

